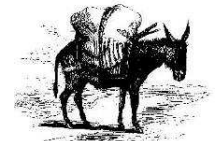
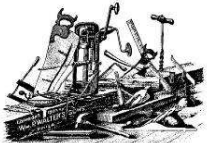


KENTUCKY CAMP CHRONICLE



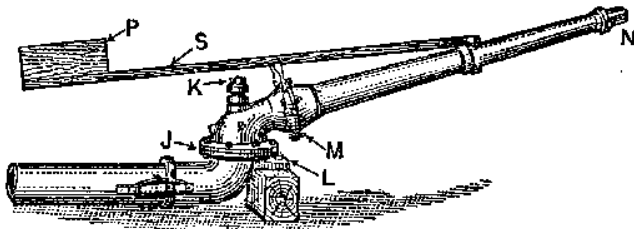
Newsletter on the gold mining and ranching heritage of Kentucky Camp, AZ

July, 2012

Hydraulic Monitor Recovered!

By Mark Doumas

August 24, 1904 - the Arizona Daily Star reports:
"During the past few weeks, the rainfall has been sufficient to enable [the Santa Rita Water and Mining Co in Boston Gulch] to operate their placer plants. They employ three shifts so that work is never stopped. They work three giant nozzles, which throw the water 100 feet and tear up the ground with splendid results."



Giant or Monitor

Drawing of a hydraulic monitor from the late 1800's

Fast-forward to May 2012: Much of the Santa Rita Water and Mining Co gold mining operation has survived. Five adobe buildings, water ditch, pipes and valves. But, the hydraulic monitors... the final and defining piece of the Santa Rita Water and Mining Company's water line that squirted water into the sides of Boston Gulch 108 years ago have never been found.... until now.

In mid-May, I received a phone mail message from an eastside Tucson resident that wanted to return some "mining equipment" that he had removed from the Kentucky Gulch/Boston Gulch area over 30 years ago. When I returned his call to get a better description and arrange a pick-up time, he kept referring to it as a "large nozzle". This seemed

INSIDE THIS ISSUE

PAGE

Hydraulic Monitor Recovered!	1
Boy Scouts Lend a Hand on Stetson Cabin	3
Announcements	4
IMPORTANT! → Membership Renewal	5
Directors Vote	5

to be too good to be true.... I just assumed he had a piece of the riveted pipeline.

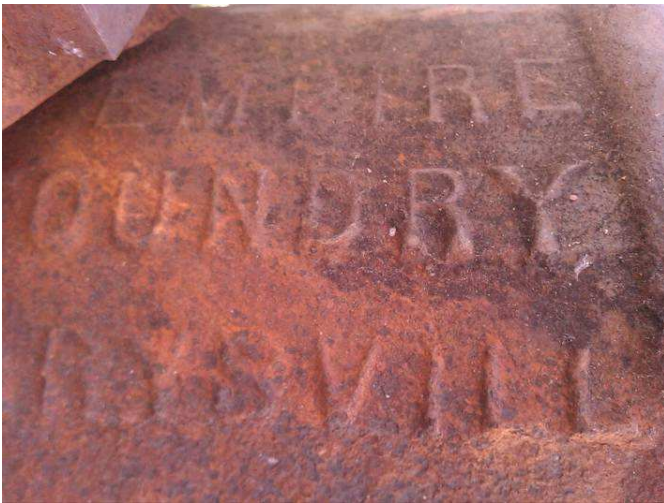
Our Forest Service liaison, Chris Schragger, and I arranged to meet the donor and pick up the equipment a few days later. When we arrived at the donor's home, we were astounded to find all the parts for a complete hydraulic monitor.... even the bolts for putting it together!

The monitor consists of three main parts. There is a 7 1/2 foot nozzle which is constructed with the same rolled-and-riveted wrought iron sheeting as the regular pipe found at the Kentucky Camp and Boston Camp locations. There is a cast iron bell housing that the nozzle bolts to. Finally, there is a cast iron gimbal section that allows the bell housing and nozzle to be swiveled to aim the stream of water. All together, the weight of these pieces is in excess of 300 pounds.



Chris Schragger indicates the size of the newly donated hydraulic monitor.

The gimbal section has some writing that indicates where it was manufactured: "Empire Foundry Marysvill, CAL". This is exactly the same wording found on the head gate valves located on the ridge above Boston Gulch, further reinforcing that the monitor is from the original Santa Rita Water and Mining Co workings. The missing "e" at the end of "Marysvill" is also the same for both the head gate valves and the hydraulic monitor..... a mystery waiting to be solved.



Writing on the gimbal section of the hydraulic monitor: "Empire Foundry Marysvill Cal".



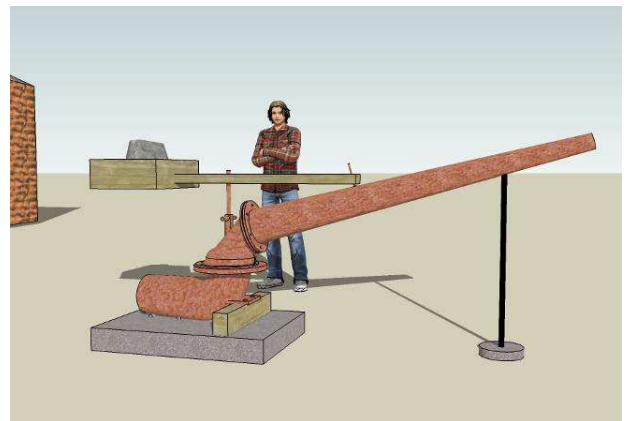
Writing on the head gate valves on the ridge above Boston Gulch

The Empire Foundry in Marysville, CA was established in 1858 making it one of the earliest in the state of California. Products from the Empire Foundry were very common in the western US and were also

shipped to South Africa, Mexico, South America, Australia, Alaska, Siberia and Siam. The foundry produced hydraulic giants at least until 1924. Empire made monitors in various sizes. In addition to our 7 1/2 foot model, they made models that were thirteen, sixteen and even eighteen feet long, capable of blasting a stream of water four to five hundred feet.

We are now working on a plan for how to best display the monitor. The current thinking is that we'll reassemble it on a small slab of concrete near the Gold Processing Building. Since the Gold Processing Building will become our museum and visitor center, keeping the monitor nearby seems to make sense.

There would have originally been a couple of wooden beams on the monitor that we will need to reconstruct: a stabilizer beam on the bottom of the monitor to prevent it from rolling from side-to-side and a counterbalance beam on top to offset the weight of the nozzle. The nozzle is not in pristine shape. It has rusted through in some areas so we'll need to make sure it is well supported.



Conceptual drawing of how the hydraulic monitor will appear on display.

This is an incredible addition to the Kentucky Camp experience and will certainly help interpret the unique hydraulic gold mining history. If you are interested in helping with the display of this artifact, please consider participating in the upcoming volunteer days at Kentucky Camp. (Second Saturday of each month) We're planning on building the display over the next few months and conducting some sort of unveiling ceremony in the Fall.... Stay tuned for details!

Boy Scouts Lend a Hand on Stetson Cabin

By Chris Schrage

On Friday April 27, just hours after the close of the "Occupy KC" volunteer week, a group of Boy Scouts from Troop 313 in Sahuarita arrived at Kentucky Camp.



Led by Eagle Scout candidate Jordan Bigler, the boys, along with several dads and Scout leaders, spent the next day applying new adobe mud to two exterior walls of the Stetson Cabin.



These walls were badly eroded from heavy rains during the winter of 2010-11, and in need of attention before this year's monsoon.

After some basic instruction in adobe preservation, the Scouts set about collecting *rajuelas*, small stones set into the mud to help hold subsequent applications.



Using scaffolds, the Scouts were able to repair the walls up to the top plate on both the north and west sides. As a result, the Stetson Cabin is in much better shape to face this year's much-needed (and hoped for!) monsoon and winter rains. Thanks for your help in preserving Kentucky Camp!



Our next volunteer day at Kentucky Camp is Saturday, August 11th.

In accordance with Federal law and U.S. Department of Agriculture policy, this institution is prohibited from discriminating on the basis of race, color, national origin, sex, age, or disability.

We are in need of a Secretary for Friends of Kentucky Camp. The Secretary manages our membership list, collects material for newsletters and submits our annual ACC and IRS filings, etc. Experience with Microsoft Word and Excel are needed. Time requirements are typically a few hours per month. Contact Mark Doumas at doumas@mindspring.com if you are interested in supporting Kentucky Camp as Secretary!

Membership Renewal

Don't miss out on the fun, the excitement, the Chronicle, and the opportunity to participate in Kentucky Camp's future! Renewing your membership is a simple way to support our ongoing rehabilitation efforts at Kentucky Camp and represents our primary source of funding. Student, Individual and Family memberships are very reasonably priced. If you'd like to give at a more substantial level, consider a Supporting or Contributing membership..... Or, even a Lifetime membership! Remember, Friends of Kentucky Camp is a 501 (c) (3) non-profit organization: all dues are tax deductible.

To see if your membership is current, look at the mailing label on the front of this newsletter. If it says "Renew in June of 12" (or '11' or '10, etc.) then your membership has expired and it's time to renew. (If your mailing label says "Renew in June of NA", then you are a lifetime member or have received a courtesy copy.) If your renewal year is in error, contact Mark Doumas at 520 299-4281 or doumas@mindspring.com.

Now, TWO Ways to Renew:

In addition to our traditional mail-in renewal on the next page, you can renew online at the Friends of Kentucky Camp website:

<http://www.kentuckycamp.org/>

Choose "Support Kentucky Camp". Using the online renewal process, you can also choose to have your newsletter delivered electronically versus hard copy.

We have an email discussion group for Friends of Kentucky Camp where we discuss current events. (such as the new hydraulic monitor donation) To join the discussion group, send an email to:

FriendsofKentuckyCamp-subscribe@yahoogroups.com

If you have changed your email address recently and wondered why you no longer receive discussion group email, you need to resend an email to the above address from your new email account. To unsubscribe, send an email from the email account you want to be removed from the discussion group to:

FriendsofKentuckyCamp-unsubscribe@yahoogroups.com

You don't need to put anything in the subject line or body of the email. Look for a confirmation email after you send the email.... If you don't see one within a few hours, remember to check your spam folder. Additions to the distribution list are screened for spammers!

IMPORTANT!

If you prefer to renew your membership using the traditional mail-in form, please detach (or copy) this page and return to the Friends of Kentucky Camp by July 31, 2012:

Friends of Kentucky Camp
c/o Mark Doumas
4320 N La Linda Rama
Tucson, AZ 85718

Membership Renewal

Enclosed is a check for \$ ____ made payable to Friends of Kentucky Camp for membership through June 2013.

Please circle:

Student (\$5) Individual (\$10) Family (\$15) Contributing (\$25)
Supporting (\$50 Lifetime (\$200)

(If a mailing label is on the back side of this and your address has not changed, there is no need to fill this part out.)

Name: _____

Address: _____

City, State, Zip: _____

Phone: _____ Email: _____

Friends of Kentucky Camp Mail-in Ballot

Our President, Vice President and At-Large director positions are now due for re-election. Mark, John and Pete have agreed to serve another two-year term. We now need to officially re-elect them... the board recommends a "For" vote for Mark, John and Pete. For your vote to count, you must be a paid-up Friends of Kentucky Camp member. If you are a lifetime member and want to avoid the cost of mailing-in a ballot, simply email doumas@mindspring.com with your "For" or "Against" vote.

President	Mark Doumas	For _____	Against _____
Vice President	John Weiss	For _____	Against _____
Director-at-Large	Pete Van Cleve	For _____	Against _____

Friends of Kentucky Camp

4320 N La Linda Rama
Tucson, AZ 85718

Web Site:

<http://www.kentuckycamp.org/>

Discussion Group:

FriendsofKentuckyCamp-subscribe@yahoogroups.com

Newsletter Submissions:

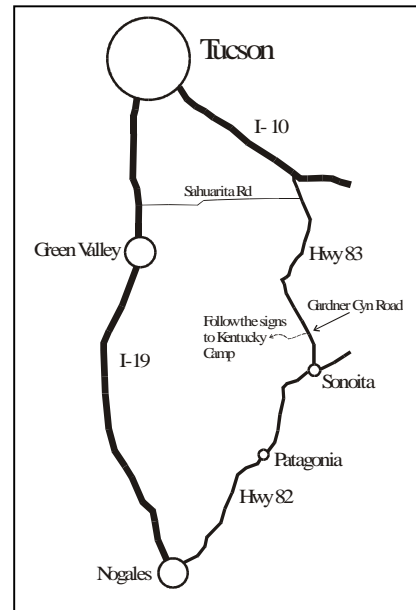
doumas@mindspring.com

Board of Directors:

President	Mark Doumas	520 299-4281
Vice President	John Weiss	520 323-0358
Secretary	OPEN	
Treasurer	Nancy Hough	520 578-9053
At-Large	Pete Van Cleve	520 378-1955

Forest Service Liaison:

Kathy Makansi 520 760-2502



Memberships:

Student (\$5) Individual (\$10) Family (\$15)
Contributing (\$25) Supporting (\$50) Lifetime (\$200)

Friends of Kentucky Camp is a 501 (c) (3) non-profit organization: all dues are tax deductible.

Friends of Kentucky Camp
4320 N La Linda Rama
Tucson, AZ 85718